



Predict Student Support Needs with LMS Data

How EAB's Edify Dashboards Make LMS Data Actionable

October 17, 2024

Meet Your Presenters



Matt Feger

*Managing Director,
Technology*

MFeger@eab.com

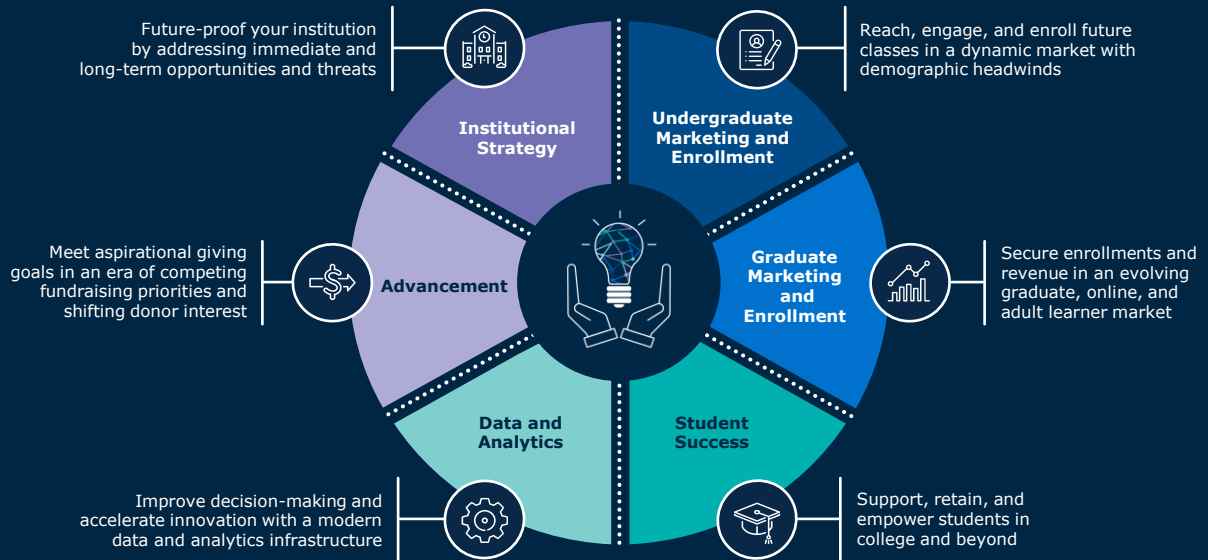


David Morton

*Senior Director,
Technology*

DavidMorton@eab.com

Insight-powered Solutions for Your Top Priorities and Toughest Challenges



We partner with **2,800+** institutions to accelerate progress, deliver results, and enable lasting change.

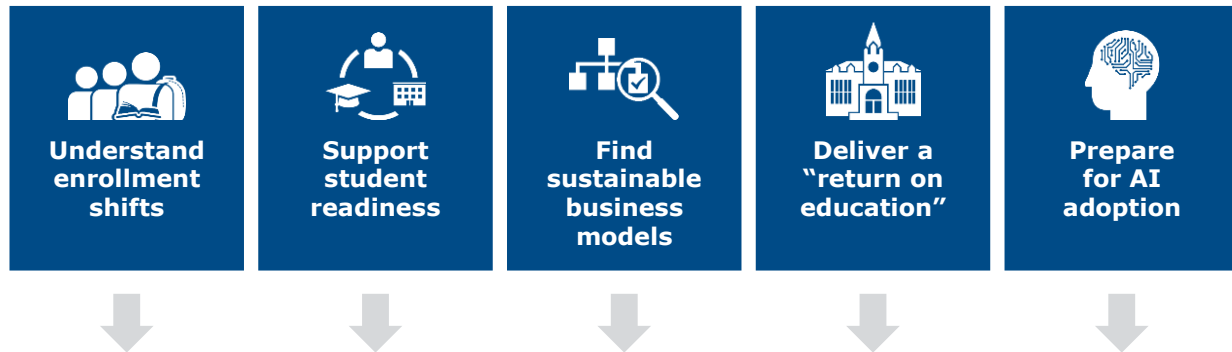
95%+ of our partners return to us year after year because of results we achieve, together.

Navigating a New Normal

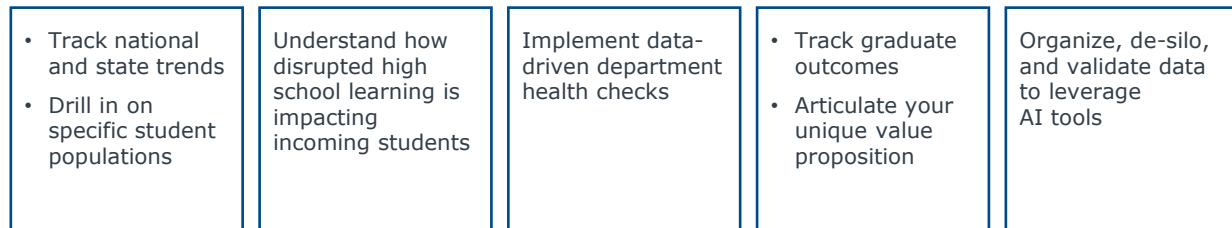


Amid Long-Term Shifts, Institutions without Reliable Data Risk Falling Behind

Imperatives for the next decade



Priorities for your data





Edify Is Your Path to a Data-Informed Campus

Make Better Decisions with Data Management Designed for Higher Ed



Access, Warehousing, and Integration

Cloud-native, secure, infinitely scalable data lake and warehouse to support critical initiatives

Data Governance

Higher ed best-practice rules and validations to ensure a single source of truth

Reporting and Analytics

Self-service, custom, and pre-built analytics to drive efficiency and support decision-making

Extend Your Team's Capacity

NEW: AI

Interact with Edify in plain language to find, access, and report on trusted data in minutes

Professional Services

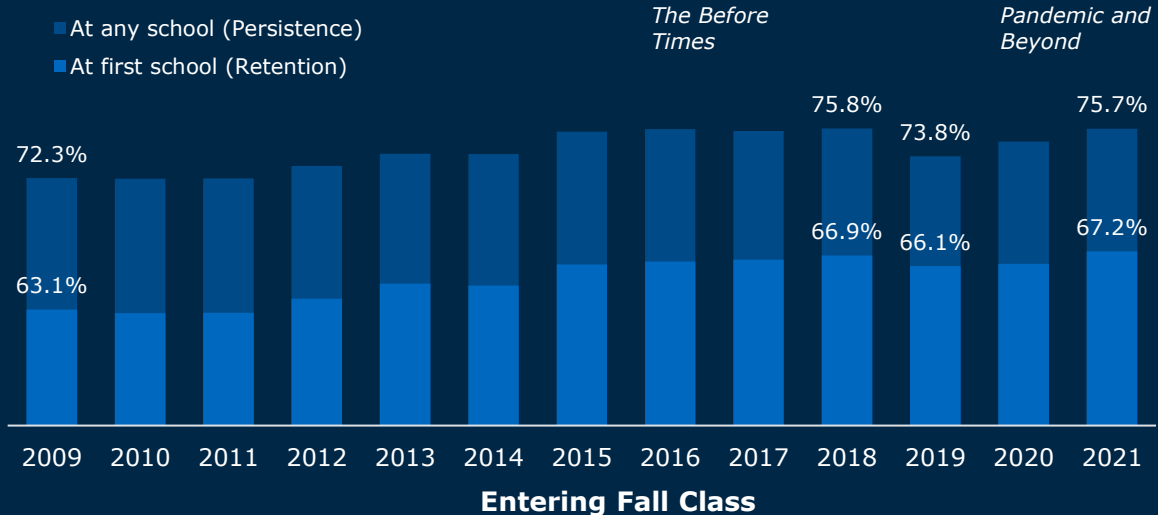
Work with experienced higher education data experts who understand your environment and goals

- 1 **The (Brief) State of Student Success**
- 2 Our Approach to Leveraging LMS Data
- 3 How to Visualize LMS Data for Leadership and End Users
- 4 Takeaways and Q&A

Our Reason to Be Optimistic

Student Success Efforts Have Never Been More Effective

Return for a Second Year



Retention is still below 2018 levels for some key groups:

- Hispanic/Latine
- Native American
- Part-time starters
- Two-year students
- Age 25+ at entry

One Reason for Pessimism

An Unseen Threat Below the Surface...



MATH SHARK

Read more

College Entering Classes

Fall 2023

College first-years

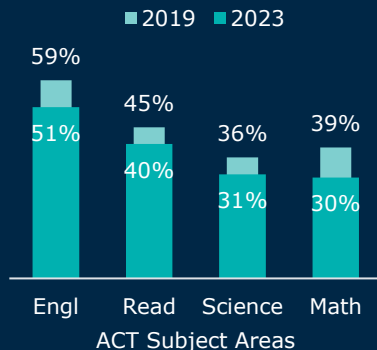
Fall 2027

Ninth-graders

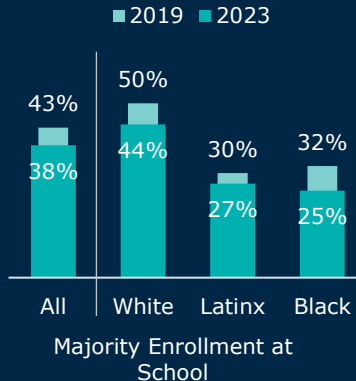
Fall 2031

Fifth-graders

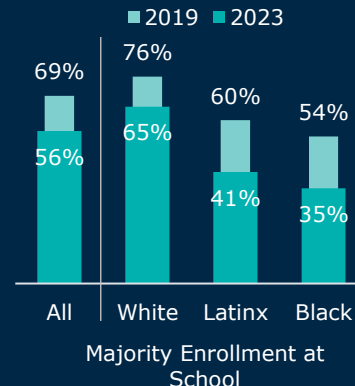
**ACT College Readiness
Among 2023 HS Grads**



**On Pace for College Math
in 8th Grade (i-Ready)**



**On Pace for College Math
in 4th Grade (i-Ready)**



Source: Source: EAB analysis of data from Curriculum Associates' *State of Student Learning in 2023*; ACT *U.S. High School Class of 2023 Graduating Class Data*; NAEP Scores *'Flashing Red' After a Lost Generation of Learning for 13-Year-Olds*. EAB interviews and analysis.

Capitalizing on an Influx of Learning Activity Data



LMS Data Provides Insights That Can Help Combat The Math Shark

With More LMS Data At Hand, What Use Can We Make Of It?

Find students who look set up to succeed but demonstrate worrying behavior early in the term

"Wait they haven't even logged in yet?"

Student Behavior

Does it matter if faculty use the discussion feature in every course? Assignments? Grades?

"Each discipline and course benefits from an individual look at what works."

New (or Old) Pedagogy

Invest tutoring and supplemental instruction resources where they matter most

"I have to do less with less so every penny counts"

Course Trends



Quick Poll

How would you describe the readiness of your student success apparatus to take on underprepared students?

Choose one

1. Very prepared
2. Mostly prepared
3. Underprepared
4. Very underprepared
5. We'll find out!

- 1 The (Brief) State of Student Success
- 2 **Our Approach to Leveraging LMS Data**
- 3 How to Visualize LMS Data for Leadership and End Users
- 4 Takeaways and Q&A

EAB's LMS Predictive Model

Upgrade Student Support Efforts with Real Time Data and Historical Trend Analysis



LMS data

LMS
Predictive
Model

Pre-enrollment data



Identified students in
need of support

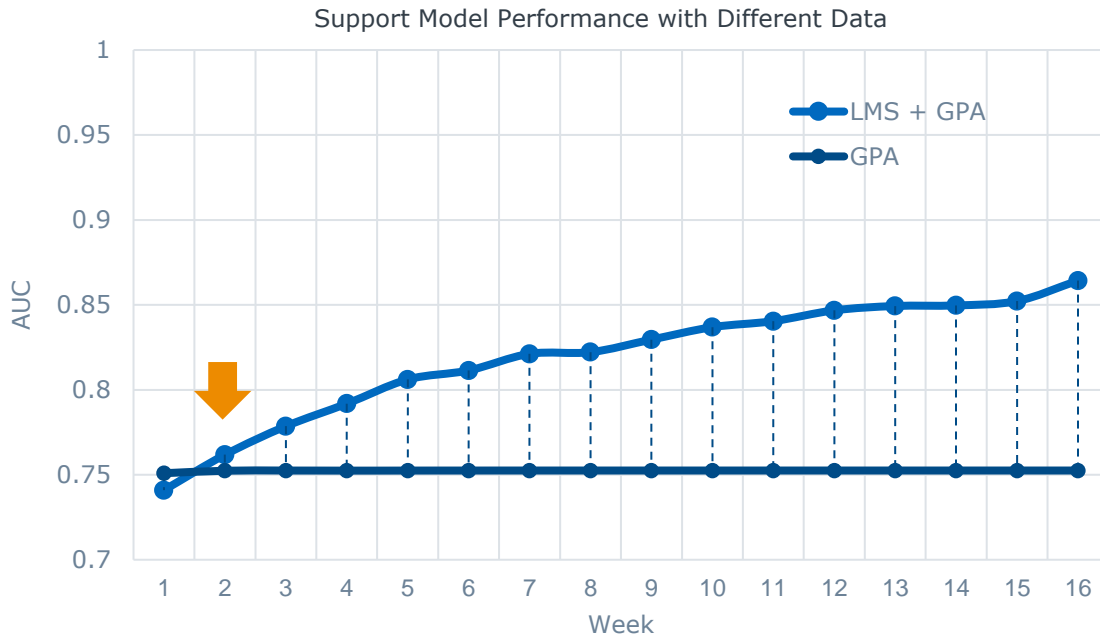
▶ Incorporating LMS Data Offers 2 Main Advantages

- Real-time assessment
- Actionable information

Predict Support in Week 2 with LMS Data



Better Identify Students Who Need Support



Addressing Common Objections



You Can Still Learn from Imperfect LMS Data



Inconsistent LMS Utilization



Most Valuable Information Found in <20 Courses

- **35%** of unproductive credits were from **1% of courses**



Student Privacy Concerns



Students Expect Their School to Use Data

- **64%** of students **expect to receive real-time assistance**



Delayed Grade Input



Don't Need Broad Adoption For Value

- The model retains predictive power with **no grade inputs**

Quick Poll

How often is LMS data used to inform student success interventions at your institution?

Choose one

1. Very often
2. Often
3. Sometimes
4. Not often
5. Almost Never

- 1 The (Brief) State of Student Success
- 2 Our Approach to Leveraging LMS Data
- 3 **How to Visualize LMS Data for Leadership and End Users**
- 4 Takeaways and Q&A



Live Demonstration of Edify's LMS Predictive Modeling

- 1 The (Brief) State of Student Success
- 2 Our Approach to Leveraging LMS Data
- 3 How to Visualize LMS Data for Leadership and End Users
- 4 **Takeaways and Q&A**

Turning LMS Data into Analysis and Action



Laying the Groundwork for Success with LMS Data



Assuage Concerns About Limitations of Dataset

Don't let perfect be the enemy of the good. Most institutions we see are ready to use LMS data to improve student outcomes.



Emphasize the Benefits of this Approach

Beyond helping students this reduces faculty time spent submitting alerts and honors the time investment they make into using the LMS.



Review Data Availability to Inform Project Scope

Contact LMS admins to understand what data your LMS collects and makes available so you don't take action on missing data.



Pilot New Strategies with Faculty Champions

Find interested faculty willing to try new pedagogical approaches based on what student behaviors lead to better learning outcomes.

Questions?



Matt Feger
*Managing Director,
Technology*

MFeger@eab.com



David Morton
*Senior Director,
Technology*

DavidMorton@eab.com

How Can We Help?



*I'd like to speak to an
EAB expert to...*



- 1 Talk about other uses of **LMS data**
- 2 Learn more about **Edify**
- 3 Discuss **another data & analytics** topic

Related Resources For You



1

Receive a copy of **today's slide presentation**



2

Receive an **executive summary** of the LMS predictive modeling accelerator



3

Subscribe to our blog and receive EAB's newest data & analytics insights **directly to your inbox**



4

Register for **our webinar** on December 3 about conducting data-informed program health checks





202-747-1000 | eab.com



@eab



@eab_



@WeAreEAB



@eab.life

