

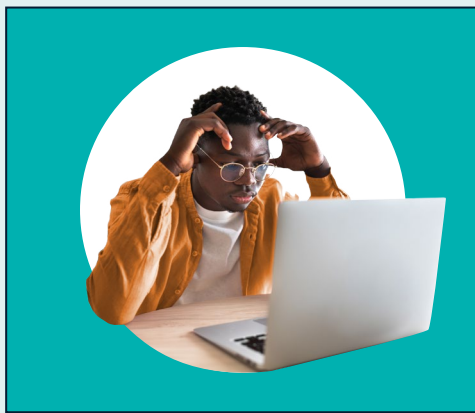
# 14

# Student Personas in the College Admissions Process

Students find the college admissions process overwhelming due to a variety of factors. Match, powered by Concourse, guides students through a streamlined process, where colleges apply to students. Explore the infographic below to learn how Match addresses the unique needs of every student.

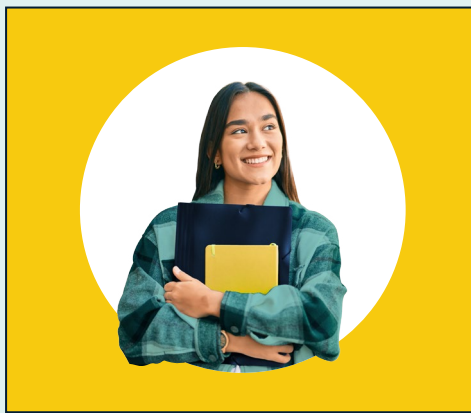


## The **Busy** Student



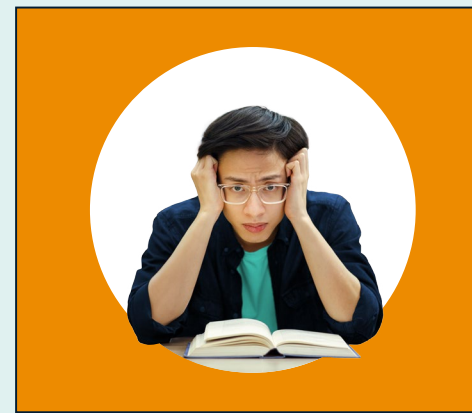
A Match profile takes just 30 minutes to complete and doesn't require essays, resumes, test scores, or recommendation letters.

## The **First-Generation** Student



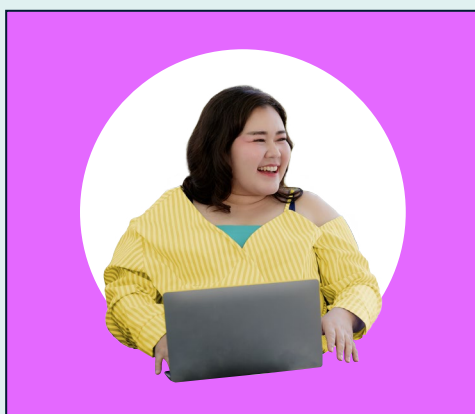
Match's 30-minute profile is designed for Gen Z with quick, straightforward questions they can answer on their own.

## The **11th Hour** Student



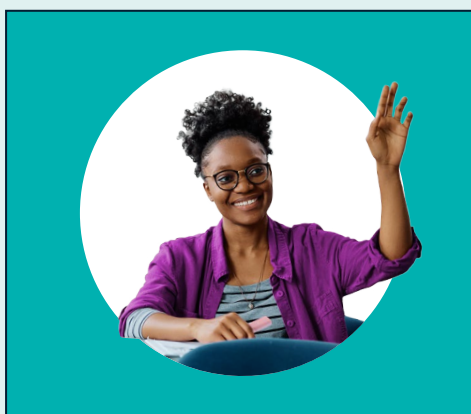
With Match, universities release acceptances monthly; students can even be admitted in June.

## The **Career-Oriented** Student



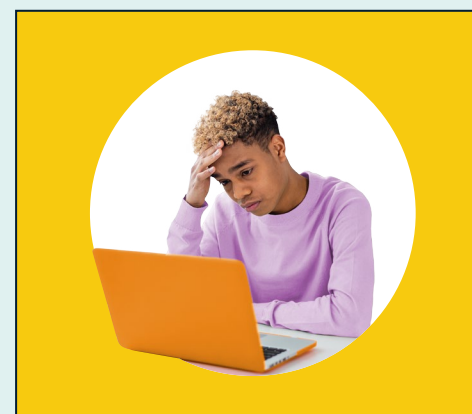
Match universities offer students customized program recommendations that can prepare them for greater success after earning a bachelor's degree.

## The **High-Achieving** Student



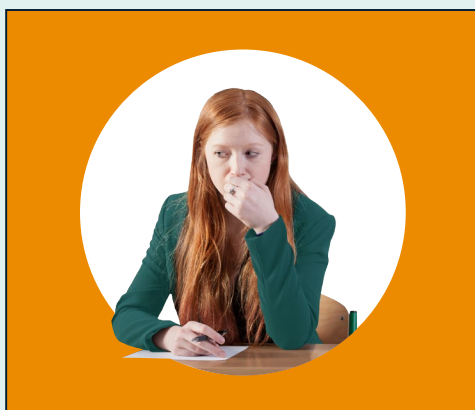
Match connects students with colleges that align with their preferences and aspirations.

## The **Unconfident** Student



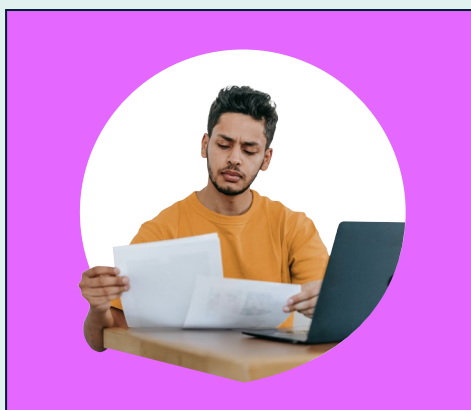
Match provides a confidence boost. Students can start receiving acceptances as early as August, well before typical application deadlines.

## The **Nervous** Student



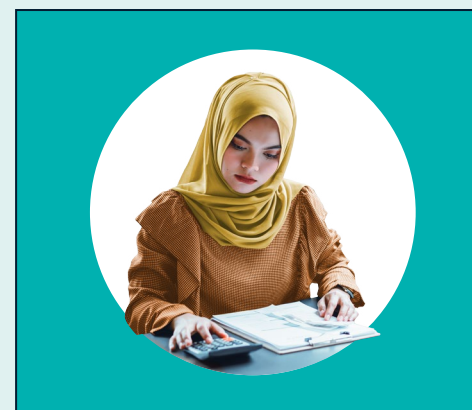
Students never receive a rejection with Match. They're only notified when universities say "yes."

## The **Indecisive** Student



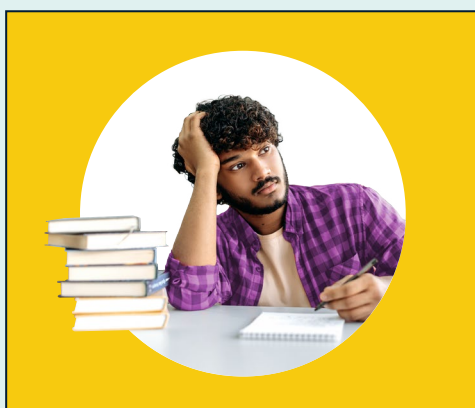
Match flips the script by allowing universities to apply to students and make tailored program recommendations.

## The **Cost-Conscious** Student



90% of Match students receive at least one admission offer that includes a scholarship.

## The **Middle 50%** Student



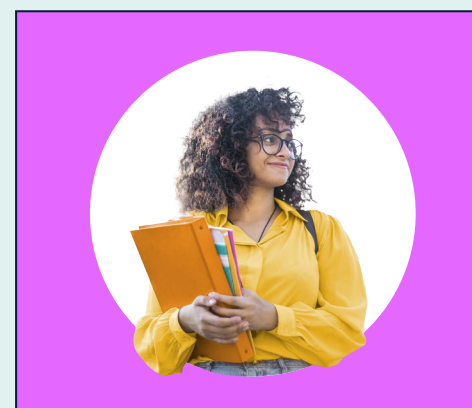
Partner universities admit 88% of Match students.

## The **Adventurous** Student



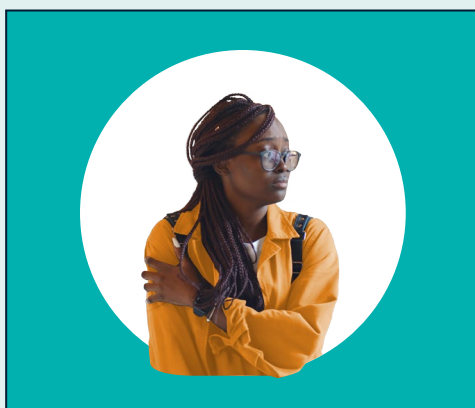
Match has university partners in 15 countries.

## The **Hometown** Student



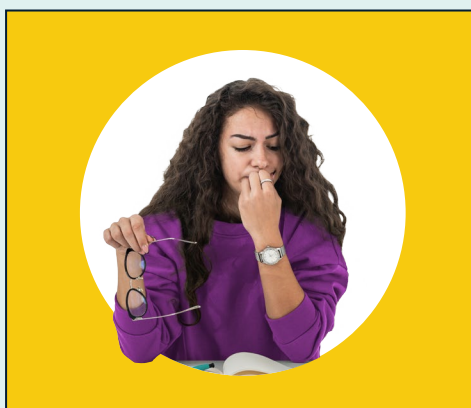
Match is designed to expand students' horizons and expose them to universities that aren't on their list.

## The **Impostor Syndrome** Student



Match profiles allow students to present their authentic selves and to be accepted by universities that value what they'll bring to campus.

## The **Undocumented** Student



Match profiles don't require students to disclose their immigration status.



Ready to **transform the lives** of every student? Scan the QR code or enter the link below to learn more.

[bit.ly/MatchForEveryStudent](https://bit.ly/MatchForEveryStudent)